



INSTITUTIONAL CLIENT MATERIALS

Platform Overview

Core Edition

White-label on-premise infrastructure for digital asset issuance, investment management & controlled secondary activity

- FULL SOURCE CODE
- OPERATOR-OWNED DEPLOYMENT
- ASSET.HAUS

Contents

01	Core Platform Capabilities
02	Optional Modules
03	White-Label & Branding
04	Integration Architecture
05	Regulatory & Compliance Coverage
06	Deployment & Infrastructure
07	Integrations
08	Commercial Model
09	Implementation Roadmap
10	What You Receive
11	Legal Disclaimer

APPENDICES

12	Feature Matrix
13	Role-Based Capability Catalogue
14	Technical Architecture
15	Glossary

At a Glance

Building a regulated digital asset platform in-house typically means long delivery cycles, heavy compliance engineering, and high execution risk — before the first offering ever goes live.

Asset Haus is a white-label, on-premise platform for compliant issuance, investor onboarding, registry/cap table, and controlled secondary activity — delivered with full source code.

Designed for banks, broker-dealers, fund managers, family offices, and regulated digital asset operators, Asset Haus lets you launch under your own brand while keeping full control of infrastructure, data, and technology.

What Asset Haus Covers (Core)

- **Issuance & offering management** — deal creation workflows, approval gates, document flows, and investor-facing deal pages.
- **Investor onboarding & compliance workflows** — progressive onboarding, pluggable KYC providers, sanctions/PEP checks, review queues, and evidential audit trails.
- **Investment processing & settlement** — direct or escrow-protected flows with operational controls, reconciliation, and full traceability.
- **Registry & cap table** — transfer-agent-controlled system of record with on-chain reconciliation and export-ready reporting.
- **Controlled secondary** — compliance-gated P2P transfers and optional OTC workflows; optional orderbook trading for licensed venues.
- **Reporting & audit readiness** — role-aware dashboards, exports, and tamper-resistant audit logging.

Deployment & Control

- **On-premise / private cloud** — your data stays in your perimeter; no SaaS dependency.
- **Enterprise operations** — Kubernetes/Helm deployment, infrastructure-as-code support, monitoring dashboards, backup/DR runbooks.
- **Integration-ready** — API-first (REST + Webhooks + WebSockets), SSO (SAML/OIDC), and export paths to your security/monitoring stack.

Commercial Snapshot

- **Perpetual on-premise license + maintenance** — no per-user or per-transaction fees.
- **Optional modules** available (e.g., orderbook trading, DeFi/yield modules, mobile apps, multi-tenant setups), activated per tenant and jurisdiction profile.

Evidence packs and control mappings support audit preparation and licensing readiness — they do not replace jurisdiction-specific legal counsel.

Typical timeline: pilot in weeks; production go-live commonly **10–15 weeks**, depending on integrations, security reviews, and regulatory sign-off.

Why Asset Haus

Launch faster without sacrificing control

Accelerate time-to-market with a production-ready foundation that you deploy and operate in your own environment. Pilot in weeks; production go-live commonly 10–15 weeks.

Full source code delivery

Receive the complete codebase to audit, extend, and maintain independently. No vendor lock-in.

Built for regulated operations

Maker-checker workflows, segregation of duties, role-based governance, and end-to-end audit trails across onboarding, investing, transfers, and admin actions.

Compliance configuration by jurisdiction

Configurable rulesets and evidence-pack documentation to support multi-jurisdiction deployments and audit preparation.

Transfer-agent-grade registry

Cap table as the system of record with controlled updates, on-chain reconciliation, and export-ready reporting.

API-first extensibility

Integrate KYC, custody, signing, payment rails, IAM/SSO, and back-office systems via versioned APIs and event-driven webhooks.

SECTION 01

Core Platform Capabilities

Everything below is included in the Core Edition license.

1.1 Deal Issuance & Offering Management

Launch compliant offerings with a structured, approval-gated workflow:

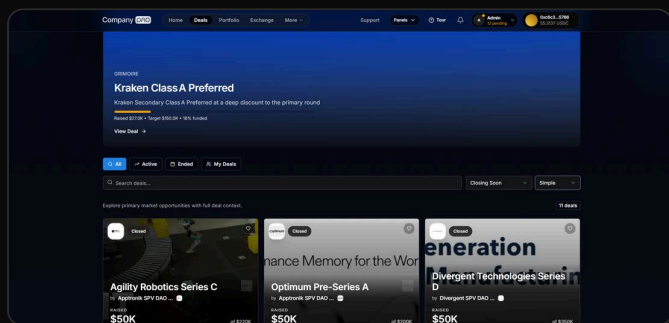
- **Deal creation wizard** — issuers configure offering terms, eligibility rules, investment limits, and documentation in a guided flow.
- **Approval workflow** — every deal goes through a maker-checker approval process before publication.
- **Virtual Data Room (VDR)** — secure document storage with role-based access tiers, download tracking, and integrated e-signing (DocuSign, Adobe Sign).

- **Deal discovery** — investors browse, search, and filter live offerings with rich deal pages. Curated collections group related offerings.
- **Private deal invitations** — invite-only deals with configurable invite links: expiry, usage limits, revocable access, domain allowlists.
- **Configurable eligibility** — restrict deals by KYC level, accreditation status, geography, investor class, or custom rules.
- **Token economics** — configure vesting schedules, cliff periods, unlock events, and distribution rules per deal.
- **Dividend distribution** — create, configure, and execute dividend payments to token holders via the cap table.
- **Corporate actions** — token splits, conversions, and other holder-level actions with full audit trail.
- **Investor Q&A** — deal-level comments and inquiry threads between investors and issuers.
- **Deal lifecycle** — full management from creation through active to closed, with audit trail at every stage.

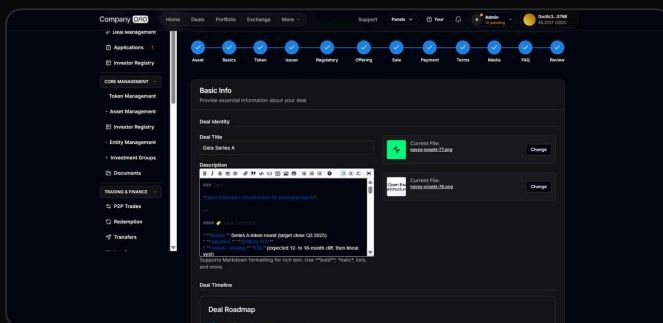
Supported asset classes: Tokenized equity, debt, real estate, fund tokens, commodities, crowdfunding offerings. The framework is asset-agnostic.

Token standards: ERC-20, ERC-1400 (partitioned securities), ERC-3643 (T-REX identity-linked compliance tokens). Deployable on any EVM-compatible blockchain.

Multi-currency: deals denominated in any fiat currency (USD, EUR, AED) with currency-specific formatting and reporting.



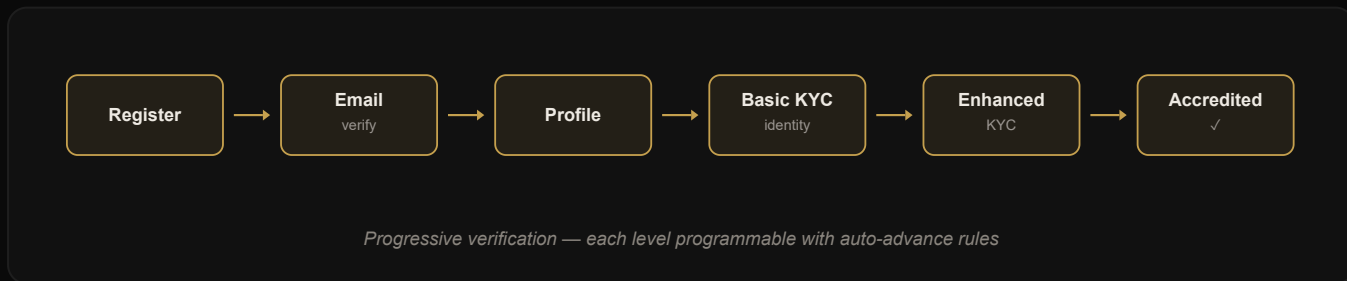
Deal page — investor view with offering terms, documents, and investment action



Deal creation wizard — issuer-facing guided flow for configuring offerings

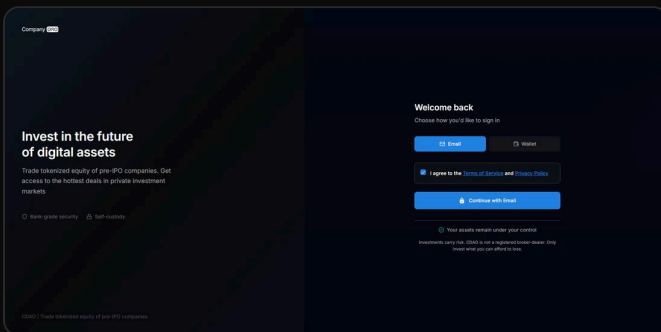
1.2 Investor Onboarding & KYC/AML

Automated, provider-driven compliance onboarding:

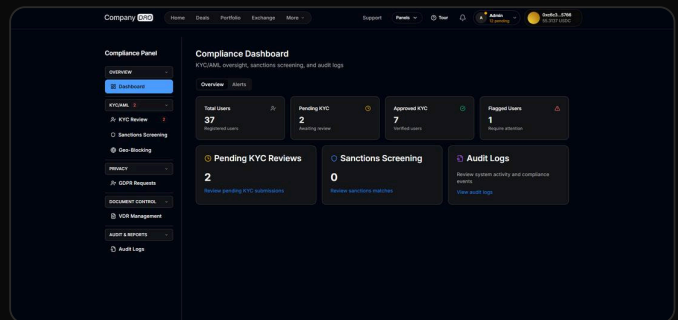


- **Progressive verification pipeline** — multi-level onboarding from registration through accreditation. Each level is programmable with auto-advance rules.
- **KYC integration** — pluggable providers (Sumsub, ShuftiPro, or your choice) with automated identity verification.

- **AML transaction monitoring** — real-time monitoring with configurable thresholds, velocity analysis, and automated alert escalation.
- **CTR/SAR filing** — automated report creation for threshold-exceeding transactions with filing management and export.
- **Sanctions & PEP screening** — automated watchlist screening at onboarding and on an ongoing basis.
- **Wallet screening** — blockchain analytics integration for wallet risk assessment.
- **Geo-blocking** — jurisdiction-level restrictions with configurable rules and access logging.
- **Enhanced Due Diligence (EDD)** — additional document requests for high-risk investors or redemptions.
- **Travel Rule compliance** — threshold-based data collection and counterparty information exchange.
- **Compliance snapshots** — automated pre-transaction checks with evidential records.



Investor onboarding — registration and verification flow



Compliance review queue — KYC/AML officer dashboard

1.3 Investment Processing



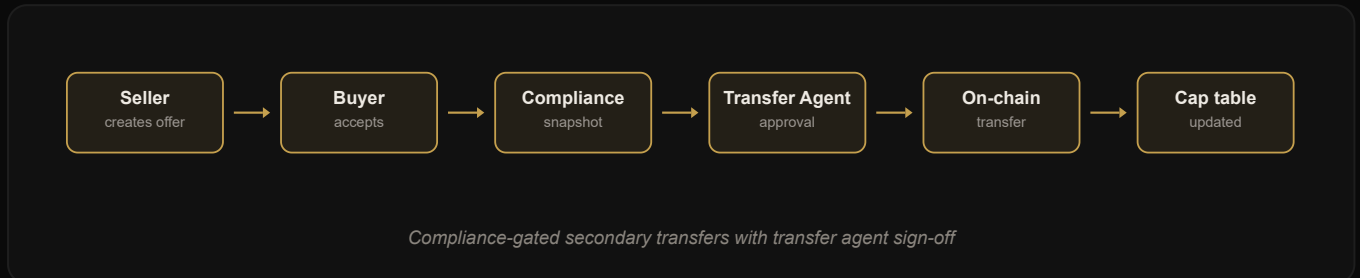
- **Direct investment** — investor commits and settles directly on-chain for verified users.
- **Escrow-protected investment** — funds held in smart contract escrow with policy-controlled release and auto-refund on timeout.
- **Pre-investment compliance checkout** — verifies KYC, accreditation, document acknowledgments, and deal eligibility in a single session.
- **Document e-signing** — subscription agreements signed electronically via VDR's integrated e-signature providers.
- **Fiat payment verification** — deal-specific wire instructions and operations queue for manual verification.
- **Complete audit trail** — evidential chain from application through settlement.

1.4 Investor Registry & Cap Table

- **Holder registry** — complete record of all token holders, positions, and ownership history.

- **Transaction ledger** — full history of issuances, transfers, conversions, and corporate actions.
- **On-chain reconciliation** — automated sync between cap table and blockchain balances with discrepancy detection.
- **Transfer-agent workflows** — registry updates exclusively controlled by Transfer Agent role with segregation of duties.

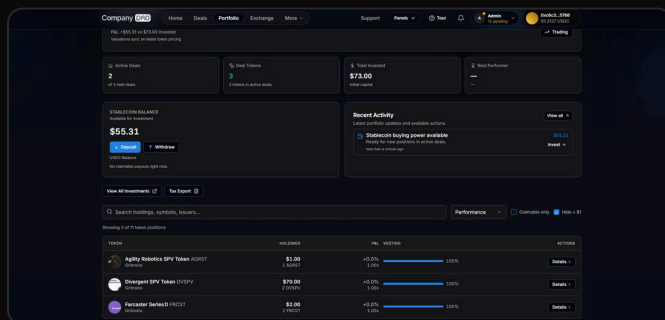
1.5 P2P Secondary Transfers



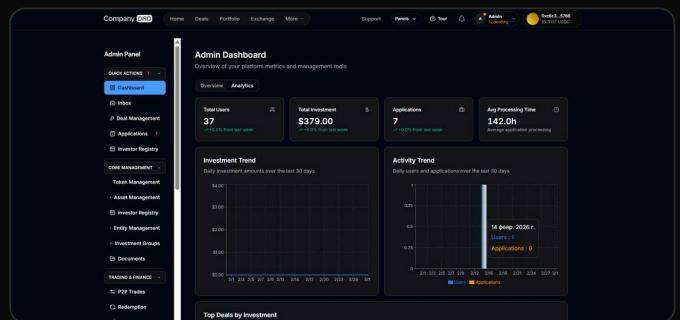
- **P2P transfer marketplace** — investors create and accept transfer offers in a regulated peer-to-peer flow.
- **Compliance gates** — every transfer triggers automated compliance snapshots before approval.
- **Transfer agent approval** — all transfers require sign-off with evidential logging.
- **Registry update** — approved transfers automatically update cap table and holder registry.

1.6 Portfolio & Reporting

- **Holdings dashboard** — real-time view of positions with performance metrics (IRR, MOIC, TVPI).
- **Transaction history** — complete record with on-chain transaction viewer for transparency.
- **Tax reporting data exports** — structured exports covering positions, realized gains, and distributions.
- **Fund performance reporting** — deal-level and portfolio-level analytics (IRR, MOIC, TVPI, DPI).
- **Operator analytics** — platform-wide reporting on deal performance, volumes, and compliance metrics.



Investor portfolio — holdings, performance metrics, and transaction history

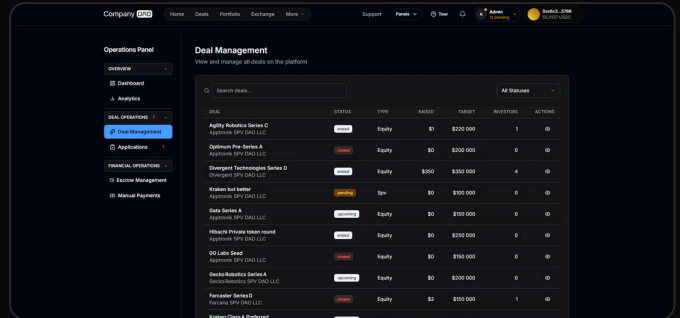
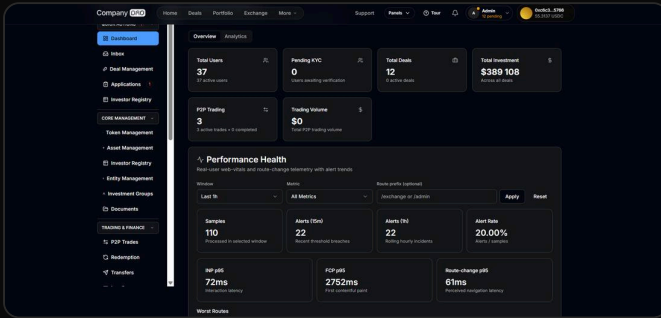


Operator analytics — platform-wide reporting and compliance metrics

1.7 Administration & Operations

- **Admin dashboard** — unified overview of platform activity, user management, and operational health.

- **Compliance operations center** — KYC/AML monitoring, alert management, CTR/SAR filing, geo-blocking, EDD.
- **Treasury operations** — transaction execution with air-gap support for offline signing.
- **Escrow management** — operational queues for release, refund, and settlement processing.
- **Audit log viewer** — searchable, filterable logs across all system categories.
- **Feature toggles** — enable/disable modules per tenant without redeployment.
- **GDPR processing** — data export and deletion request workflows.



Admin dashboard — platform activity, user management, and operational health Operations center — escrow management, treasury, and settlement processing

1.8 Roles & Governance

ROLE	RESPONSIBILITIES
Investor	Onboarding, investing, transfers, portfolio, support requests
Issuer	Deal creation, investor pipeline, document management, reporting
Broker	Referral management, application tracking, pipeline analytics
Transfer Agent	Registry/cap table operations, transfer approvals, token lifecycle
Compliance Officer	KYC/AML oversight, sanctions review, regulatory reporting
Operations	Escrow processing, settlement, treasury, reconciliation
Admin	Tenant administration, user/role management, configuration
Support	Ticket handling, user assistance, escalation
SuperAdmin	Platform governance, tenant lifecycle, cross-tenant operations

- **Maker-checker workflows** — sensitive actions require two-person authorization.
- **Segregation of duties** — conflicting roles cannot be assigned to the same user.
- **Role applications** — structured application process for elevated roles with admin review.

- **Audit logging** — every action logged with actor identity, tenant context, and before/after snapshots.

SECTION 02

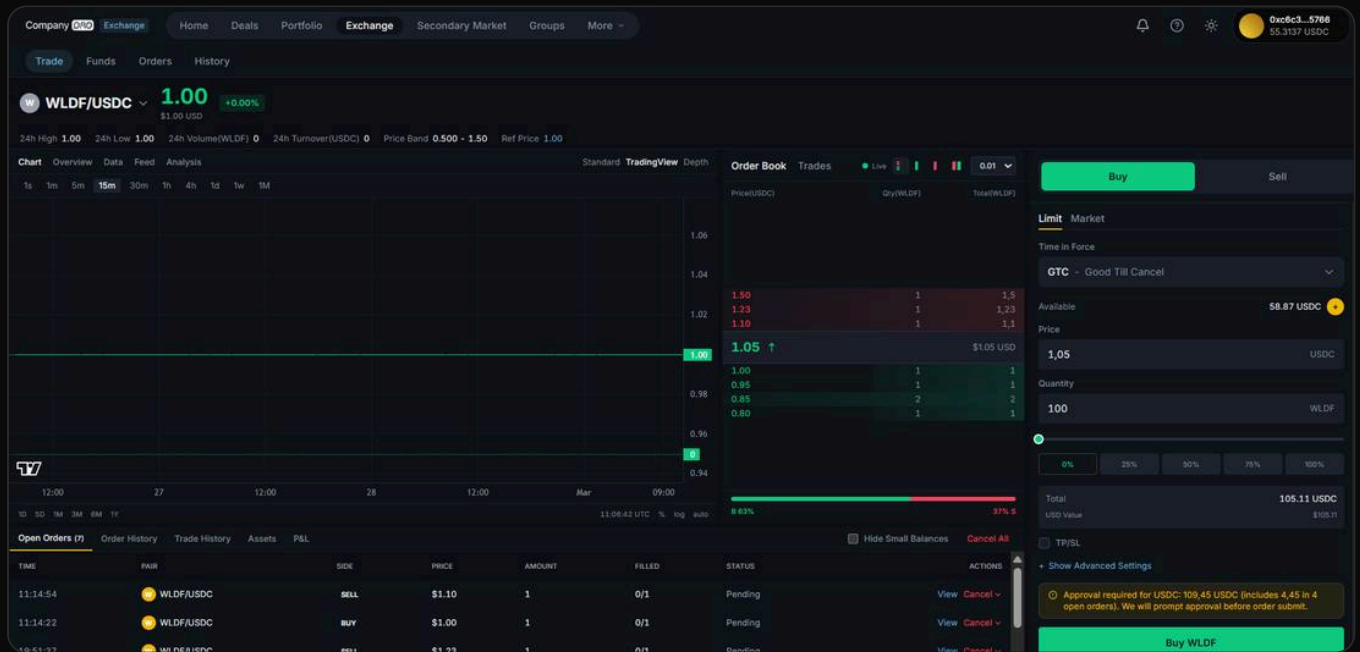
Optional Modules

Each module is licensed separately and can be activated at any time after initial deployment.

2.1 Professional Orderbook (CLOB)

For clients holding a trading venue license — a full exchange-grade matching engine:

- Real-time central limit orderbook with Level 2 market depth
- Limit and market orders with time-in-force options (GTC, IOC, FOK, GTD)
- Price protection, slippage controls, and circuit breakers
- DvP settlement — atomic on-chain settlement via smart contract
- Candlestick charts across 7 intervals with 24h rolling market stats
- Sub-second matching with deterministic event replay



Professional orderbook — exchange-grade trading interface with Level 2 depth and order management

2.2 DeFi Modules

Staking — flexible and fixed staking with tier progression, multiplied rewards, priority deal access, and configurable fee structures.

Lending Protocol — supply and borrow with configurable interest rate models, collateral factors, liquidation thresholds, and platform-controlled risk parameters.

2.3 Community Connect — Internal Social Network

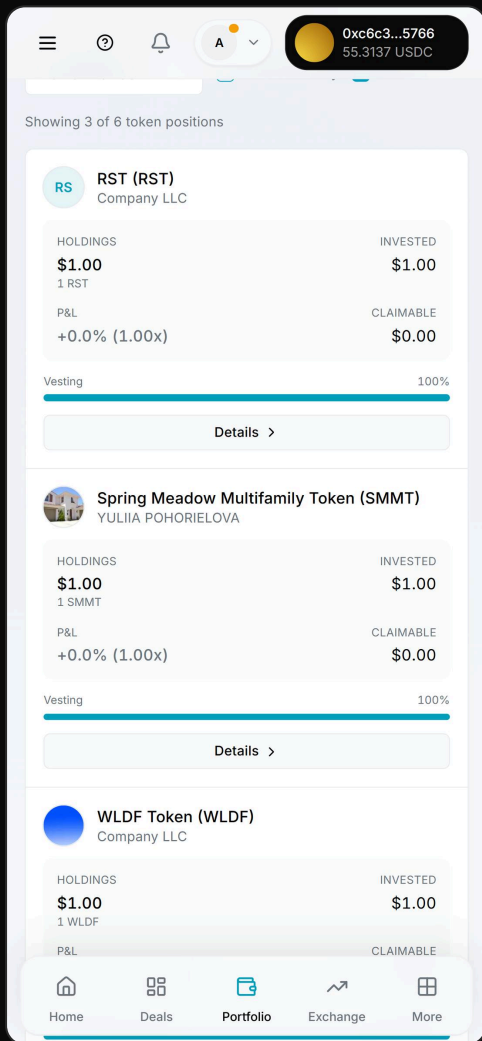
Platform-internal investor community: social feed, user profiles, follow/discover, engagement (like, comment, share), trending topics, investment groups, privacy controls, and content moderation.

2.4 AI-Powered Investor Assistant

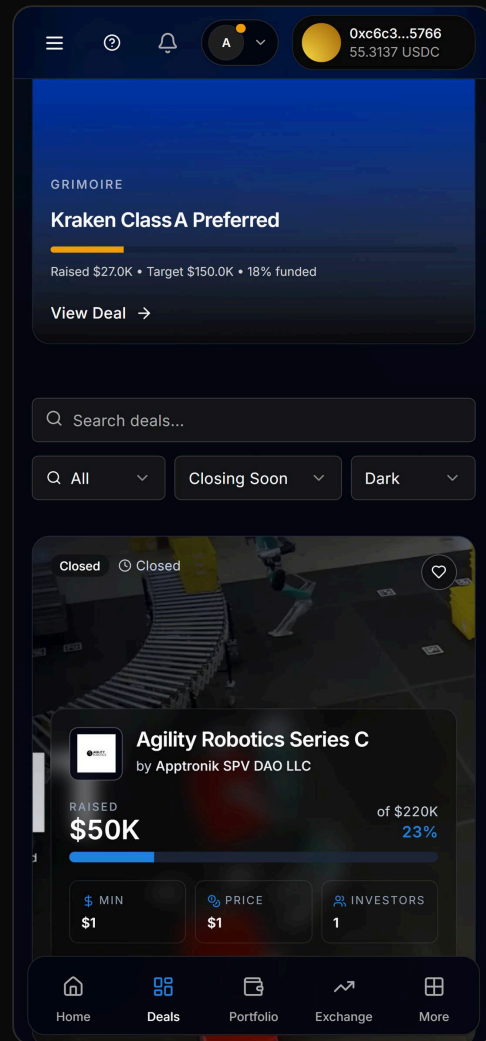
Read-only AI agent for investor self-service: portfolio queries, platform guidance, compliance-safe operation, automatic ticket handoff, and 24/7 availability.

2.5 Mobile Applications (iOS + Android)

Branded mobile apps published under your name to App Store and Google Play. Full platform parity, instant OTA updates, push notifications, biometric authentication. Source code and build pipeline included.



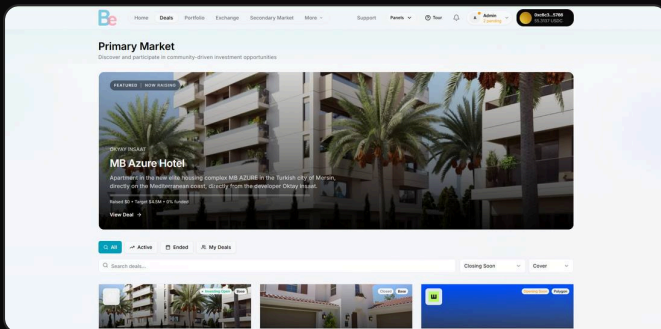
Mobile app — iOS



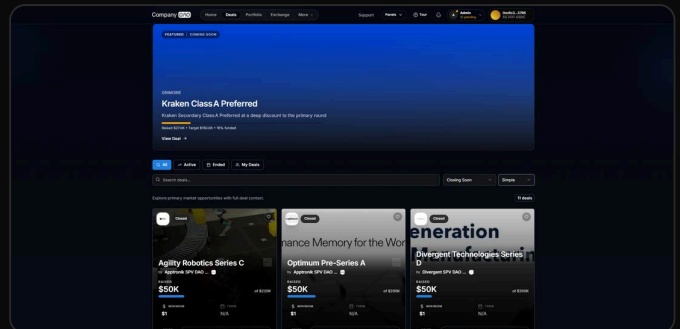
Mobile app — Android

2.6 Multi-Tenant Operations

Operate multiple brands, jurisdictions, or business units from a single deployment: independent configuration, strict tenant isolation, separate branding/domains, instant provisioning.



White-label — Tenant A with custom brand, colors, and domain



White-label — Tenant B on the same deployment

2.7 Additional Modules

Redemption Gate — investor-initiated token-to-equity/cash conversion with multi-step approval and audit trail.

OTC Trading — bilateral negotiated trades with compliance and transfer-agent settlement workflows.

Marketing & Growth Tools — referral/affiliate program, customizable feed page, newsletter campaigns, Telegram integration.

SECTION 03

White-Label & Branding

Included in the Core Edition:

- **Complete visual branding** — custom logo, colors, typography applied across the entire platform.
- **Custom domain** — your domain, your brand. End users see only your identity.
- **Branded communications** — emails, notifications, and documents carry your branding.
- **Localization-ready** — multi-language UI framework supporting RTL languages, configurable locale and currency display.

SECTION 04

Integration Architecture

4.1 API-First Design

- **RESTful API** — comprehensive, role-organized API surface. Versioned endpoints (v1, v2) with backward-compatible evolution.

- **WebSocket streams** — real-time data feeds for market data, order updates, and notifications.
- **Webhook events** — configurable delivery with retry logic, dead-letter queues, guaranteed at-least-once delivery.
- **Client API keys** — programmatic access with configurable scopes and rate limits.
- **API documentation** — full OpenAPI specification with role-based endpoint documentation.

4.2 Integration Models

MODEL	DESCRIPTION
Standalone white-label	Complete branded platform on your infrastructure
Headless / API-only	Backend as investment engine behind your existing application
Widget embedding	Embed specific modules (deal pages, KYC, portfolio) into your frontend
SSO integration	Connect to your identity provider (SAML, OIDC)

SECTION 05

Regulatory & Compliance Coverage

Core license includes 1 evidence pack. Additional packs are available as Professional Services. Evidence packs support licensing readiness and audit preparation — they do not constitute legal advice.

CRYPTO ASSET FRAMEWORKS

FRAMEWORK	JURISDICTION
MiCA (CASP)	European Union
VARA (VASP)	Dubai, UAE
MAS Payment Services Act	Singapore
ADGM FSRA	Abu Dhabi, UAE
DIFC	Dubai IFC, UAE
CBB Crypto-Asset Module	Bahrain

FRAMEWORK	JURISDICTION
-----------	--------------

DASP

El Salvador

SECURITIES & CROWDFUNDING FRAMEWORKS

FRAMEWORK	JURISDICTION
-----------	--------------

ECSPR

European Union

SEC Regulation D

United States

MIFID II Investment Firm

European Union

MIFID II MTF

European Union

FCA Investment Firm

United Kingdom

CROSS-CUTTING STANDARDS

STANDARD	COVERAGE
----------	----------

GDPR

Data protection, DSAR workflows, consent management

FATF AML/CFT

Transaction monitoring, Travel Rule, suspicious activity reporting

SOC 2 aligned controls

Access control, audit trails, change management, availability

SECTION 06

Deployment & Infrastructure

6.1 On-Premise / Private Cloud

- **Data residency guarantee** — all platform data resides exclusively within your chosen infrastructure and jurisdiction. No external telemetry, no cloud callbacks.
- **Container images** — OCI-compliant containers for application, API, workers, and background services.
- **Helm charts** — production-ready Kubernetes manifests with configurable resources and health checks.
- **Infrastructure-as-code** — Terraform modules for cloud or on-premise provisioning.

- **Backup & DR** — automated backups with point-in-time recovery and documented RPO/RTO targets.
- **Monitoring** — Prometheus metrics and Grafana dashboards for health and business KPIs.
- **High availability architecture** — multi-replica deployments with health checks, auto-restart, and rolling updates. HA configuration provided; uptime depends on operator infrastructure.

6.2 Air-Gap & Restricted Network Support

- Mirrored container registries for fully offline deployment
- Self-hosted alternatives for all external dependencies
- Air-gapped treasury signing with offline transaction preparation

6.3 Infrastructure Requirements

PROFILE	SPECIFICATIONS	USE CASE
Standard	24 vCPU, 80 GB RAM, 800 GB storage	Single tenant, moderate traffic
Enterprise HA	36+ vCPU, 120 GB RAM, 1.2 TB storage	Multi-tenant, high availability

6.4 Blockchain Support

- EVM-compatible networks (Ethereum, Polygon, Arbitrum, BSC, and more)
- Security token standards — ERC-20, ERC-1400, ERC-3643
- Smart contract suite with proxy upgrade patterns
- Third-party audit readiness — source code structured for independent audits
- Institutional signing — HSM, MPC, multi-sig via Fireblocks, BitGo, or self-managed

SECTION 07

Integrations

CATEGORY	SUPPORTED	NOTES
KYC/Identity	Sumsub, ShuftiPro	Pluggable provider architecture
Sanctions/Analytics	Chainalysis, internal watchlists	Blockchain analytics, wallet screening
Fiat Payment Rails	Bank wire, SEPA, SWIFT, card, fiat on-ramp	Manual, on-ramp, or third-party

CATEGORY	SUPPORTED	NOTES
Blockchain RPC	Managed providers or self-hosted nodes	Air-gap compatible
Custody/Signing	Fireblocks, BitGo, HSM, MPC, multi-sig	Pluggable custody architecture
Email	SMTP, SendGrid, Mailgun, Resend	Self-hosted SMTP for air-gap
Monitoring	Prometheus, Grafana, SIEM exports	Your observability stack
Storage	AWS S3, MinIO (self-hosted)	Documents, KYC files, media
E-Signature	DocuSign, Adobe Sign	Via VDR module
Secrets	HashiCorp Vault, cloud-native KMS	Key rotation and management

SECTION 08

Commercial Model

8.1 Core Edition License

- **Perpetual on-premise license** with maintenance and update coverage
- Includes all capabilities described in Section 1
- 1 tenant, 1 EVM blockchain environment, 1 regulatory evidence pack
- No per-user or per-transaction fees
- **No vendor lock-in** — source code, operate independently after deployment

8.2 Optional Modules

MODULE	LICENSING
Professional Orderbook (CLOB)	Separate license
DeFi: Staking + Lending	Separate license
Community Connect (Social Network)	Separate license
AI Investor Assistant	Separate license
Mobile Apps (iOS + Android)	Separate license

MODULE	LICENSING
Multi-Tenant Operations	Separate license
Redemption Gate	Separate license
Additional Evidence Packs	Per framework
Additional Blockchain Networks	Per network

8.3 Support & SLA

COMMITMENT	TARGET
Critical incident response	Within 1 hour
Non-critical support	Within 1 business day
Scheduled maintenance	72 hours advance notice
Security patches	Critical: 24h · High: 72h

Platform uptime is a shared responsibility between Asset Haus (application reliability, patches, HA architecture) and the operator (infrastructure, networking, monitoring). The platform is architected for 99.9%+ availability when deployed on the reference HA infrastructure.

8.4 Professional Services

SERVICE	DESCRIPTION
Deployment & hardening	Environment setup, security hardening, production readiness
Integration implementation	KYC, blockchain, custody, email, and SSO integration
Compliance workshops	Jurisdiction profiling, regulatory mapping, evidence-pack customization
Training & enablement	Operational training for admin, compliance, and support teams
Audit preparation	Support for regulatory audits and SOC 2 reviews
Data migration	Investor registry import, legacy data mapping
Custom development	Feature extensions, custom integrations, bespoke workflows

Implementation Roadmap

Discovery

2–3 weeks

Business model, jurisdiction profiling, integration scope, compliance mapping

Solution Blueprint

2–3 weeks

Deployment topology, compliance config, integration plan, module selection

Pilot Deployment

4–6 weeks

Staging environment, test execution, stakeholder validation

Production Go-Live

2–3 weeks

Cutover, operational handover, monitoring setup

Typical timeline: pilot in weeks; production go-live commonly 10–15 weeks, depending on integration complexity, security reviews, and regulatory sign-off.

Build vs. Buy

FACTOR	BUILD IN-HOUSE	ASSET HAUS CORE
Time to production	18–24+ months	10–15 weeks
Compliance evidence packs	Built from scratch	Available for 13+ frameworks
Ongoing team	8–15 engineers full-time	Existing ops + optional support
Regulatory updates	Internal legal + engineering	Maintained with license
Risk	Unproven architecture	Production-tested platform
Source code	Full ownership	Full ownership (perpetual license)

What You Receive

A fully operational, turnkey platform deployed on your infrastructure — not just source code. The delivery includes dedicated DevOps and integration engineering time to get you to production.

Turnkey Delivery

- Fully deployed & operational platform** — Asset Haus engineers deploy, configure, and harden the platform on your infrastructure. You receive a working production system, not a codebase to assemble.

- **DevOps engineering included** — infrastructure provisioning, Kubernetes setup, CI/CD pipelines, monitoring configuration, and production hardening are performed by our engineering team as part of the delivery.
- **Integration engineering included** — KYC provider integration, blockchain configuration, custody/signing setup, email infrastructure, and SSO connection are implemented by our team during the pilot phase.
- **Workflow customization** — compliance flows, deal approval chains, investor onboarding steps, and business rules are configured to your specific requirements before handover.
- **Key generation & custody on your side** — all cryptographic key generation and storage is performed on your infrastructure via HSM, MPC, or your chosen key management solution. Asset Haus never holds or has access to private keys.

Source Code & Repositories

REPOSITORY	CONTENTS	STACK
Platform Frontend	Investor portal, issuer dashboard, admin panel	Next.js 15, React, TypeScript, Tailwind CSS
API Server	Business logic, REST API, WebSocket, workers	Node.js, Express, TypeScript
Smart Contracts	Escrow, token lifecycle, sale contracts	Solidity, Hardhat
Mobile App <i>(optional)</i>	iOS + Android with build pipeline	React Native, Expo

What Is Not Included

- Hosting infrastructure (you provide or procure)
- Third-party service accounts and fees (KYC, blockchain RPC, email, custody, e-signature)
- Regulatory licenses (platform supports licensing — obtaining licenses is the operator's responsibility)
- Legal counsel and jurisdiction-specific legal opinions
- Penetration testing execution (platform is pen-test ready; testing arranged by operator)

SECTION 11

Legal Disclaimer

This document is technical and commercial information for pre-sales evaluation. It is not legal advice. Regulatory requirements vary by jurisdiction and may change. The non-custodial architecture and compliance tools described herein may simplify licensing requirements in certain jurisdictions but do not guarantee exemption from custodial or other regulatory obligations. Final licensing, jurisdiction suitability, and regulatory compliance must be validated by qualified legal counsel.

Feature Matrix

Core Platform (Included in Core License)

CAPABILITY	STATUS
User registration (email + wallet)	Available
Wallet-based authentication + MFA	Available
Role-based access control (9 roles)	Available
KYC integration (Sumsub, ShuftiPro)	Available
AML transaction monitoring & CTR filing	Available
Sanctions & PEP screening	Available
Travel Rule compliance	Available
Deal creation, approval, and lifecycle	Available
Virtual data room (VDR) with e-signing	Available
Direct + escrow-protected investment	Available
Investor registry (cap table) with on-chain reconciliation	Available
P2P secondary transfers with compliance gates	Available
Portfolio, fund performance (IRR, MOIC, TVPI)	Available
Security token standards (ERC-1400, ERC-3643)	Available
Multi-currency deal denomination	Available
White-label branding & custom domain	Available
API versioning & webhook guaranteed delivery	Available

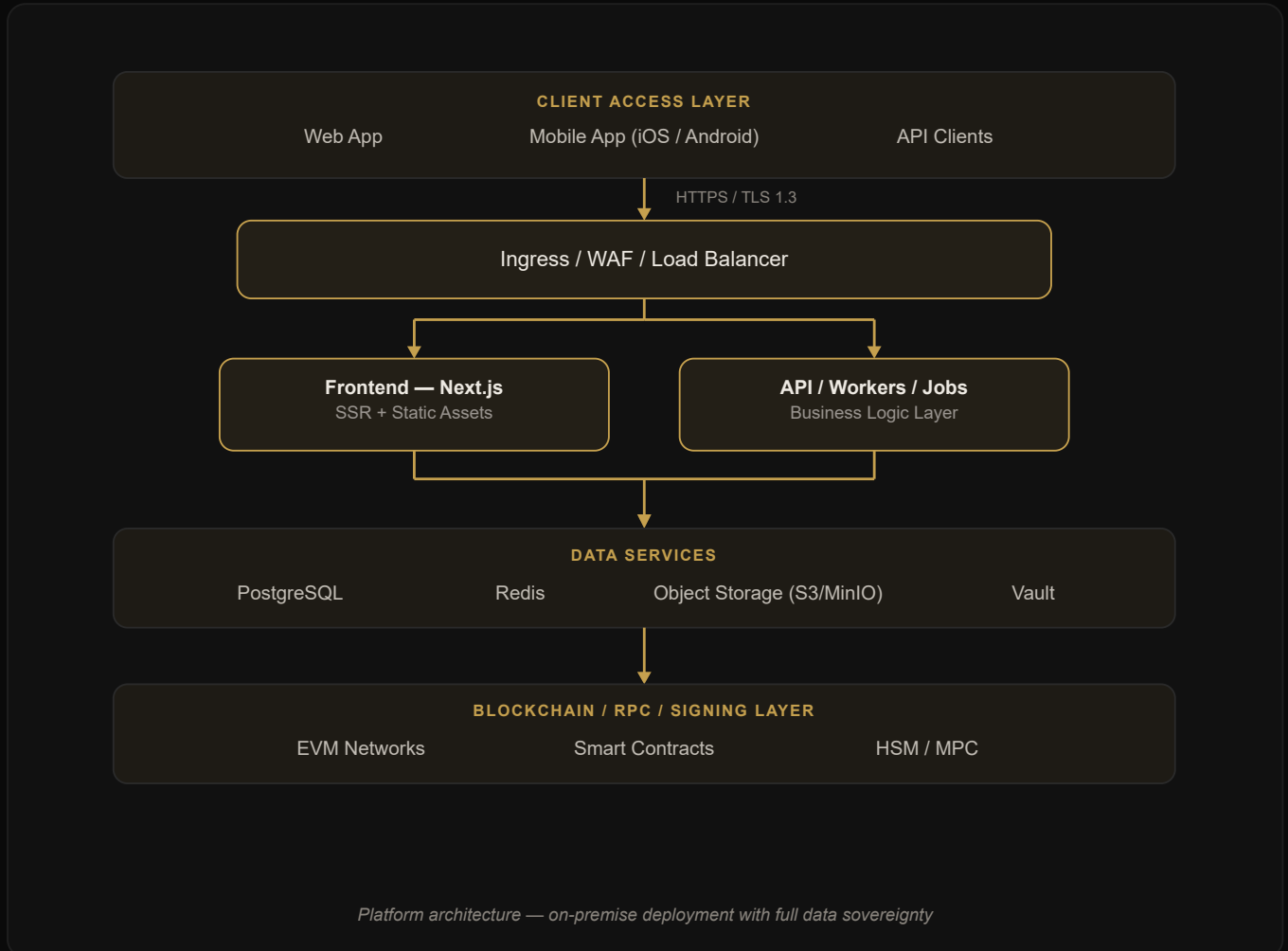
CAPABILITY	STATUS
Compliance operations center & audit logs	Available
Data residency / sovereignty controls	Available
Sandbox / testnet environment	Available
Fiat payment rails (bank wire, SEPA, card)	Integration
Institutional custody (Fireblocks, BitGo)	Integration

Optional Modules (Licensed Separately)

MODULE	STATUS
Orderbook trading (CLOB) + DvP settlement	Available
Staking and tier progression	Available
Lending protocol	Available
Community Connect (social network)	Available
AI investor assistant	Available
Mobile app (iOS + Android)	Available
Multi-tenant operations	Available
Redemption gate	Available
OTC trading	Available
Marketing & growth tools	Available

Technical Architecture

Logical Topology



Scalability

- **Horizontal scaling** — stateless API and worker tiers scale independently via Kubernetes HPA.
- **Database** — PostgreSQL with read replicas, connection pooling, and partitioned audit tables.
- **Real-time** — Redis-backed pub/sub and WebSocket layer handles thousands of concurrent connections.
- **Background processing** — worker-based job queues decouple heavy operations from the request path.

Security Highlights

- Defense in depth with zero-trust network model

- TLS 1.3 in transit, AES-256 at rest
- JWT session management with HttpOnly, Secure, SameSite cookies
- Kubernetes pod security (non-root, read-only filesystem)
- Comprehensive audit logging with tamper-resistant storage
- Penetration-test ready — supports independent security assessments

Audit Logging

Structured logging across 8 categories: authentication, KYC, compliance, deals, investments, transfers, admin actions, system events. Every entry includes tenant context, actor identity, timestamp, and before/after snapshots. Exports available for SIEM integration.

APPENDIX D

Glossary

TERM	MEANING
Tenant	Logically isolated client environment within the platform
Maker-checker	Two-person approval: one submits, another approves
Cap table	System of record for token/share holders, positions, and ownership
CLOB	Central Limit Order Book — professional-grade trading engine
DvP	Delivery vs. Payment — atomic on-chain settlement
Escrow	Smart contract holding funds until release conditions are met
EVM	Ethereum Virtual Machine — smart contract runtime
HSM	Hardware Security Module — tamper-resistant key management
MPC	Multi-Party Computation — distributed key management
VDR	Virtual Data Room — secure document repository
ERC-1400	Security Token Standard — partitioned with transfer restrictions
ERC-3643	T-REX — identity-linked compliance token standard
IRR	Internal Rate of Return — annualized return metric

TERM	MEANING
MOIC	Multiple on Invested Capital — total value vs. capital invested
SPV	Special Purpose Vehicle — legal entity for risk isolation
SLA	Service Level Agreement — contractual support commitments



Asset Haus — Institutional Infrastructure for Every Deal

Asset Haus · asset.haus